



Professional Display Systems



SOLUTIONS

Industry Solutions

About Us	03
Why TOCHI Digital Signage?	04
Retail Solutions	06
Restaurant Solutions	08
Transportation Solutions	10
Airport Solutions	12
Education Solutions	14
Finance Solutions	16
Tourism and Hospitality Solutions	17
Defense Industry Solutions	18
Healthcare Solutions	20
Smart Building and Residential Solutions	22
Public and Private Institution Solutions	23

ABOUT US



Your Reliable Partner for Professional Display Solutions

Since 1995, ERPA Teknoloji has been a **pioneer in industrial technology** through its domestic production capabilities and has established itself as a comprehensive solution center within the industry. Consistently ranked among **"Turkey's Top 500 IT Companies,"** ERPA Teknoloji has successfully delivered numerous projects domestically while also extending its services internationally through a well-established supply network across multiple regions.

As the company that established Turkey's first monitor and printer laboratory, ERPA Teknoloji has transformed its expertise in display technologies into innovative and locally developed products under the **TOCHI** brand. Today, TOCHI offers a comprehensive range of solutions, including videowalls, digital signage displays, kiosks, digital totems, **smart bus stop displays, in-vehicle displays, in-vehicle PCs,** defense industry displays, industrial monitors, panel PCs, mini PCs, and smart building systems. In addition to standard products ranging from 4.5 inches to 110 inches, ERPA Teknoloji has the capability to design and manufacture customized display solutions tailored to specific project requirements and dimensions.

Our products are engineered to withstand demanding outdoor conditions and fully comply with **IP protection standards** against dust and liquids. Our engineering expertise and commitment to quality are reinforced by nationally and internationally recognized certifications, including **CE, EMC, TSE, TSE-HYB, Industrial Registration Certificate, and Domestic Goods Certificate.**

Our in-vehicle, smart transportation, and railway system solutions fully comply with **ECE R10 standards** for electromagnetic compatibility, **EN 50155 standards** for resistance to harsh temperature and vibration conditions, and **UN/ECE R118 standards** for fire safety.

ERPA Teknoloji conducts all manufacturing operations in accordance with the **ISO 9001:2015 Quality Management System,** placing customer satisfaction and continuous improvement at the center of its processes. With its strong domestic manufacturing capabilities, engineering excellence, and innovative vision, ERPA Teknoloji continues to develop the technologies of the future.

Manufacturing operations are carried out at our facility located on Basın Ekspres Avenue, Halkalı, İstanbul, while our research and development activities are conducted within the AREL TEKMER and Dijitalpark Technopark innovation ecosystems.



Why TOCHI Digital Signage?



TOCHI Digital Signage makes communication more effective and eye-catching by ensuring brands deliver their messages at the right time and in the right place. Thanks to high image quality and a smooth broadcasting experience, screens transform from just a broadcast tool into a powerful communication tool. With the central management system, all screens are easily controlled from a single panel, and content can be updated instantly. This provides savings on printing and operational costs, and brands can interact dynamically with their target audiences. TOCHI offers flexible solutions in different sectors such as retail, corporate areas, education, and healthcare.

**“RIGHT MESSAGE,
RIGHT TIME,
RIGHT SCREEN.”**



TOCHI Digital Signage delivers your messages with accurate positioning and timing across shopping malls, hotels, schools, hospitals, and both public and private institutions. Content is instantly updated, attracts attention with high-resolution visuals and videos, and enhances customer engagement and brand awareness. All screens are easily managed from a central system, allowing fast and effective content sharing without printing costs. Offering a sustainable and environmentally friendly solution, TOCHI elevates your digital communication to the next level.



Retail Solutions

TOCHI Retail Solutions enable the centralized management of product promotions, campaigns, advertisements, and directional content in shopping malls and stores. With real-time content updates, the right message reaches customers at the right place and at the right time.

High-resolution and eye-catching visuals increase in-store engagement, while energy-efficient infra-structure helps reduce operational costs. With TOCHI, brands transform digital screens into powerful communication tools, making the shopping experience more dynamic, memorable, and efficient.



- High brightness and resolution
- Easy and fast content updates
- 24/7 uninterrupted operation
- 4.4 cm ultra-slim design
- Durable structure suitable for public spaces

“

**MORE VISIBILITY.
FASTER DECISIONS.**



Digital Signage Displays



Kiosk Displays



Videowall Displays



Totem Displays

- Elevator Displays
- Information Displays
- Security Displays
- Mirror Displays

- Information Kiosks
- Payment Kiosks
- Totem Displays
- Videowall Displays

Restaurant Solutions

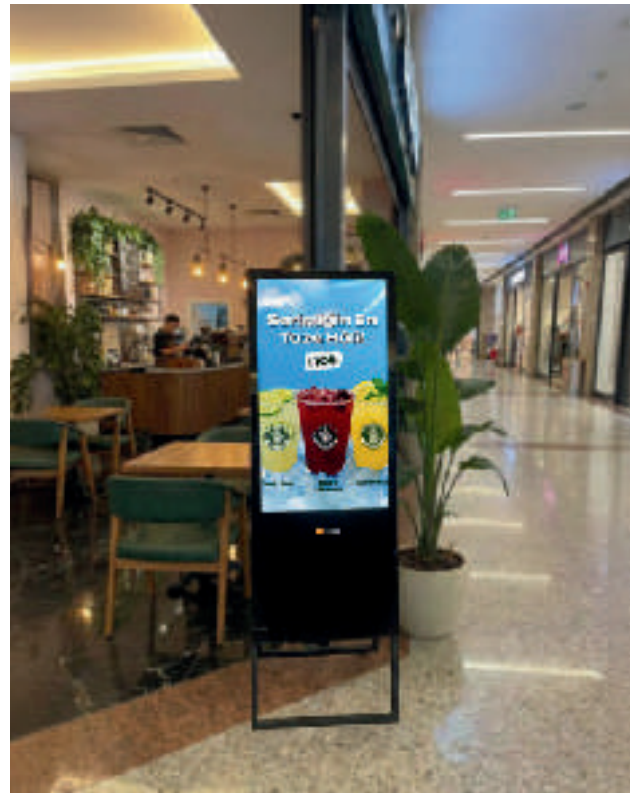


The unique operational flow of the restaurant sector creates a strong competitive advantage when supported with the right products and systems.

TOCHI offers comprehensive product solutions that simplify daily restaurant operations, increase efficiency, and enhance guest satisfaction. It strengthens customer engagement by enabling fast publishing of menus, welcome messages, and campaign announcements, while ensuring price and

- High-resolution digital menu and advertising visuals
- Low-cost content management compared to printed menus
- Instant, centralized management of content and price updates
- A modern, professional restaurant image
- Fast and easy installation

- Menu Boards
- Portable Menu Boards
- Desktop Displays
- Ordering Kiosks
- Totems
- Window Displays
- Videowalls



Portable Menu Board



Desktop Ordering Kiosk



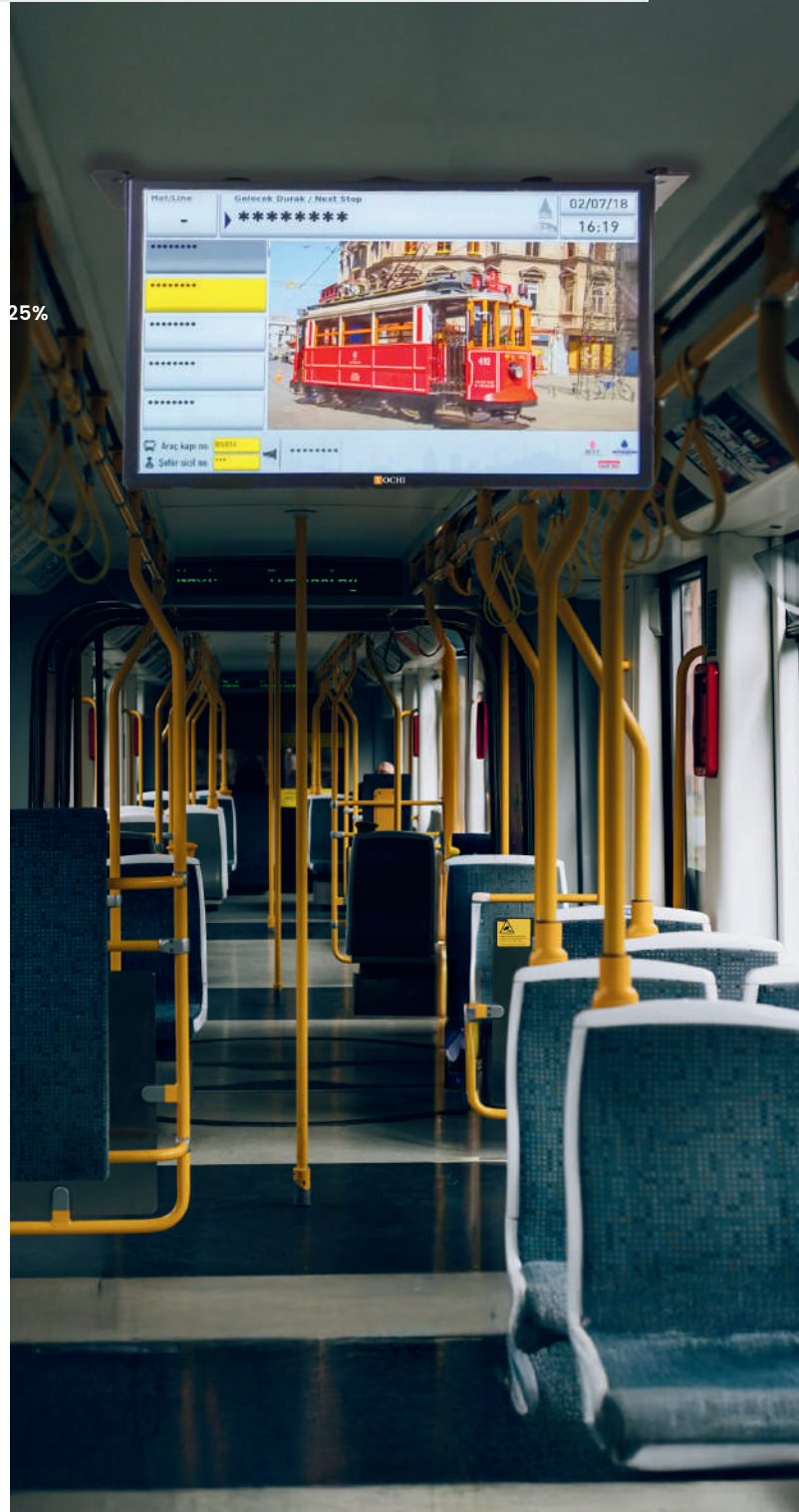
Freestanding Ordering Kiosk

Transportation Solutions

TOCHI provides secure, durable, and integrated solutions for public and private organizations operating in the transportation sector. With a wide range of applications—from bus and metro systems to station infrastructure—our products enhance the passenger experience while making operational processes more efficient for businesses.



- Smart Stop Displays
- Mirror Monitors
- Rear View Displays
- Speed Indicator Displays
- Industrial Mini PCs
- Stretched Bar Displays
- Train and Metro Displays
- Payment Kiosks
- Passenger Information and Wayfinding Displays



- Custom design and production flexibility tailored to specific needs
- High image quality even under direct sunlight
- Impact-resistant and durable structure
- Automatic restart after power failure
- Fast and easy installation capability



Airport Solutions

TOCHI offers comprehensive product solutions for the airport industry. Systems designed to optimize passenger flow, technologies that support security, and products that simplify facility management are developed in accordance with modern aviation standards. Our durable and high-performance solutions enhance operational efficiency while improving the passenger experience.

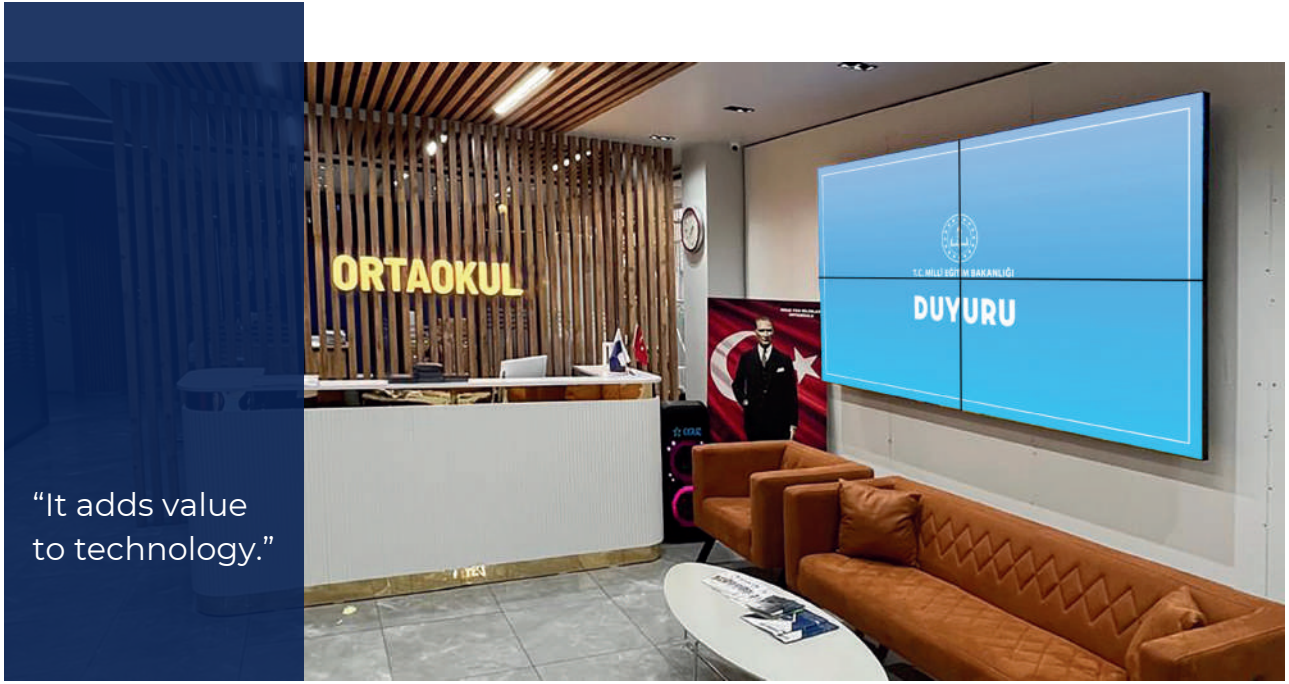


- Coordinates passenger flow by accelerating human traffic.
- Provides guidance and real-time information for arrivals, departures, and delays.
- Flight information displays, check-in kiosks, advertising totems, and videowall solutions can be easily positioned throughout every area of the airport.
- Offers highly visible and effective digital solutions for advertising and information delivery in terminals, commercial areas, duty-free zones, and shared passenger spaces.



- Information Displays
- Biometric Access Screens
- Security Displays
- Queue Ticketing Systems

- Information Kiosk
- Payment Kiosk
- Parking Displays
- Video Wall



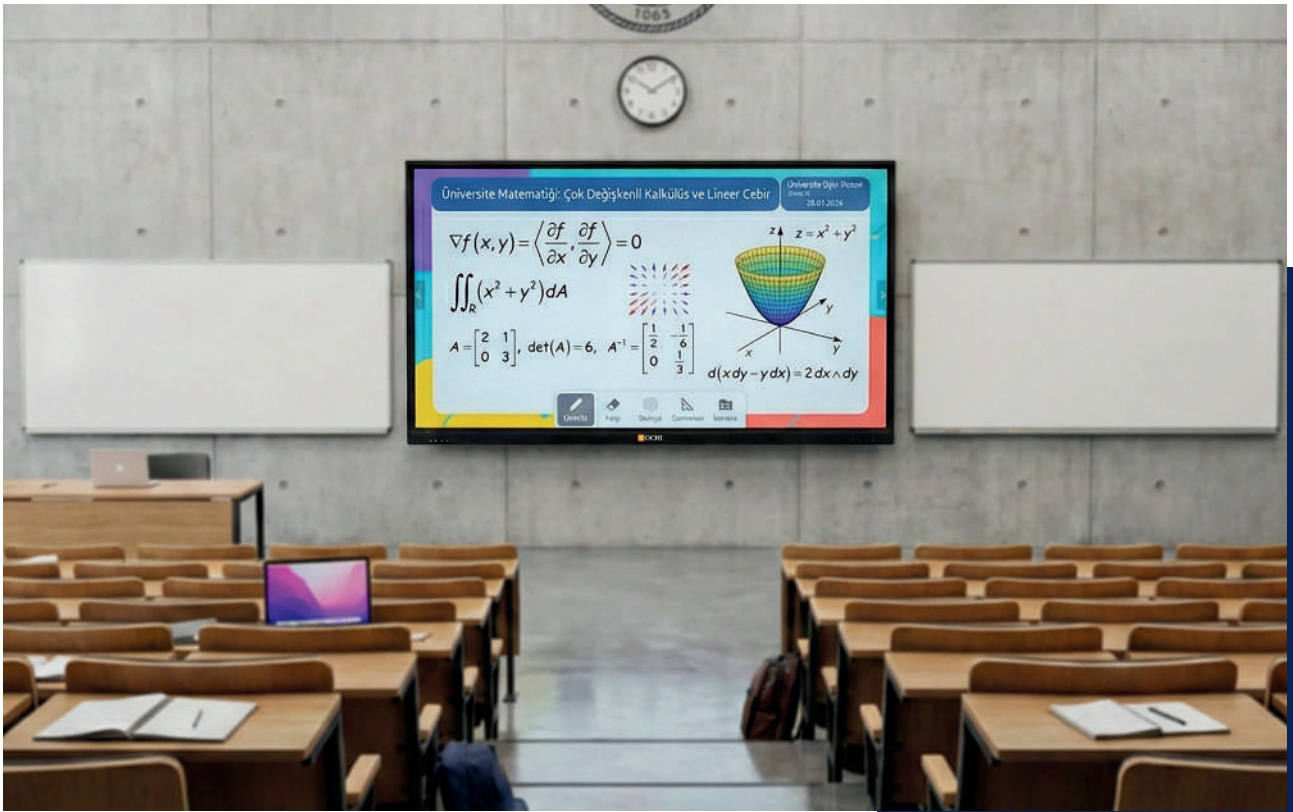
“It adds value to technology.”

Education Solutions

Accurate and timely communication is an integral part of the learning process in educational institutions. TOCHI simplifies announcement, scheduling, and information processes with digital solutions developed for schools and educational institutions. It enhances classroom participation by making course content visual and interactive, enables teachers to focus more on students, simplifies time and resource management, and provides institutions with a modern and effective educational environment.



- Smart Board
- Information Screens
- Digital Podium
- Doorside Screens
- Kiosk
- Totem
- Videowall



- Used for campus guidance and information
- Provides a modern and professional educational environment
- Optimizes time and resource management
- Manages announcements and notifications from a single center
- Instantly updates schedules, exams, and event information
- Makes course content visual and interactive, increasing classroom engagement.



Finance Solutions



Improves contactless interaction and the digital banking experience in financial institutions. With high resolution, touch sensitivity, durable structure, and remote management support, TOCHI offers uninterrupted and sustainable solutions.

- Controls all screens from a single point through centralized management
- Enhances customer experience with touch and interactive features
- Reliable for all environments with durable, 24/7 operational, impact-resistant design.



- Queue Management System
- Payment Kiosk
- Information Screens
- Security Screens
- Doorside Screens
- Meeting Room Screens
- Totem
- Videowall

Tourism and Hospitality Solutions

TOCHI strengthens guest experience and simplifies operational processes with solutions tailored for the tourism and hospitality industry. By offering aesthetic and functional products in lobbies, restaurants, spas, and meeting halls, TOCHI enables centralized management of guest welcoming, guidance, and announcements, improving both efficiency and experience



- Elevator Screens
- Information Screens
- Security Screens
- Doorside Screens
- Kiosk
- Meeting Room Screens
- Totem
- Videowall



“ Take Guest Satisfaction and Service Quality to the Highest Level. ”

- Provides instant guidance and information
- Delivers event announcements quickly and practically
- Simplifies room service order and request collection processes
- Increases operational efficiency through centralized content management
- Offers aesthetic and functional solutions in lobbies, restaurants, spas, and meeting rooms.



Defence Industry Solutions

Designed in accordance with military standards, it delivers high performance under harsh air, land, and sea conditions. With its durable structure and specialized software, it provides practical usability in critical missions.

- Maximum performance under harsh field conditions
- Full compatibility with air, land, and naval platforms
- Superior resistance to temperature changes, humidity, shock, drops, and vibration Touch-enabled, high-brightness, vivid display quality
- Complete protection against dust, water, and dirt with durable outer casing
- Fully compatible with night vision goggles Integrated operation with navigation and global positioning systems
- Flexible custom production in different sizes based on project needs.



- Military Vehicle Display Systems
- Industrial Mini PC
- Industrial Panel PC
- UAV / UCAV Display Systems Control Unit Desk
- Mobile Command Control Unit
- Marine Displays / Marine PC Panel-Type Displays
- Rugged Tablet
- Stretched Displays



Healthcare Solutions

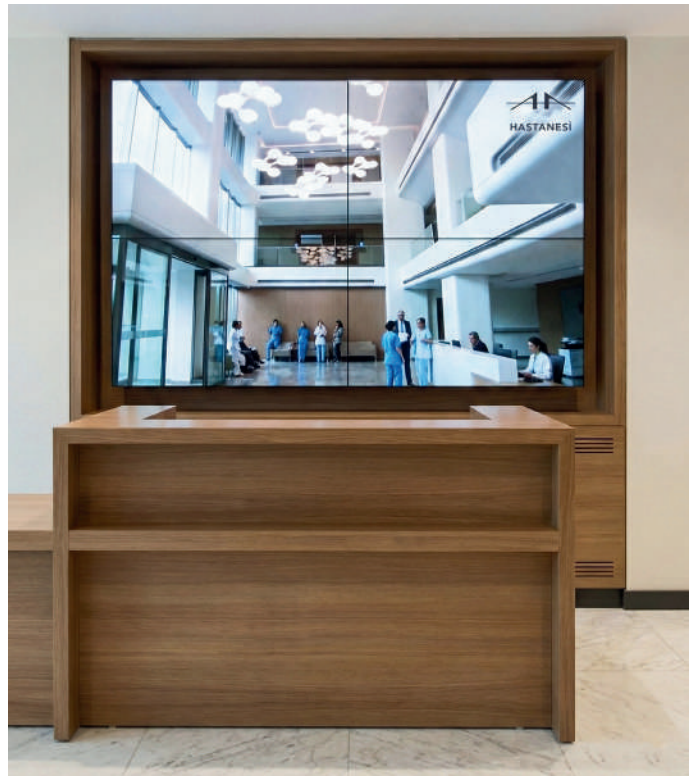
In hospitals and clinics, it facilitates communication and patient guidance by instantly delivering information, directional guidance, and emergency messages. TOCHI solutions ensure fast information flow between staff and patients, deliver the right information to the right person at the right time during emergencies, and improve the operational efficiency of institutions.



Improves communication and patient experience through instant information and guidance.
Reduces staff workload and increases operational efficiency.
Safe and durable with antibacterial surfaces, impact resistance, and 24/7 operation capability.



- Operating Room Screens
- Medical Displays
- Elevator Screens
- Information Screens
- Security Screens
- Doorside Screens
- Kiosk
- Totem
- Videowall



Smart Building and Residential Solutions

Makes living spaces safer, more comfortable, and more efficient. Centrally or independently managed systems provide real-time monitoring and control of all areas.

Innovative technologies transform buildings into interactive, digital, and future-ready living spaces while enabling residents, managers, and visitors to meet their needs through a single integrated system. Processes such as announcements, information sharing, security, and energy management are integrated with smart solutions to enhance the living experience.



- Elevator Screens
- Information Screens
- Videowall
- Totem



Custom design and production based on project needs
IP65 protection class resistant to environmental conditions
High resistance to impacts
Clear and high-quality display performance under sunlight
Uninterrupted performance at all temperatures
Suitable for 24/7 operation
Energy-saving, environmentally and budget-friendly design

Public and Private Institution Solutions



Digital solutions that support office productivity and internal collaboration provide simultaneous interaction across large spaces. With videowall, security, elevator, totem, and meeting room screens, TOCHI meets the different usage needs of public and private institutions.

- Elevator Screens
- Behind-the-Mirror Screens
- Security Screens
- Doorside Screens
- Meeting Room Screens
- Videowall
- Kiosk
- Totem



Offers remote management and common communication capabilities.



Provides simultaneous interaction in large spaces with high image quality.



Multifunctional use for system monitoring, advertising, communication, and entertainment.



2026/1

Contact Us

Head Office:Halkalı Merkez, Basın Ekspres Cd. No:25 D:1 A Kat 2, 34303 Küçükçekmece/İSTANBUL

Arel Tekmer: 15 Temmuz, Bahar Cd. No:61, 34212 Bağcılar/İstanbul

Dijitalpark Teknokent: Barbaros Mah. Şebboy Sk. No:4/1 İç Kapı No:2 Ataşehir/İSTANBUL

+90 212 293 58 26

+90 530 238 95 57

erpateknoloji.com

info@erpateknoloji.com

   / erpa.teknoloji

